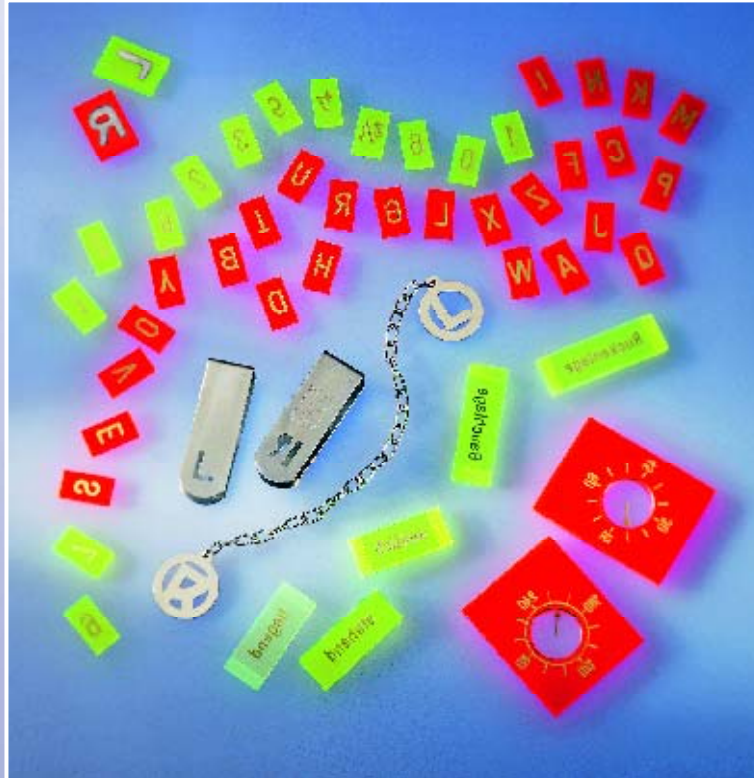


CAWO Film Markers

Characteristics of the products described in this publication can be changed at any time without notice



CAWO Lead Markers are used to expose marks and legends on the X-ray film during exposure. They are transparent plastic tablets engraved with the letter or mark which is filled up with a radiopaque lead plastic. They are about 3 mm thick.

Letters and numbers: 7,5 or 10 mm high
R & L clips
Text Markers: 5 mm high

R & L Markers: rectangular 15 mm high
R & L on chain
Marker clock for kidney and liver examinations

Printed in April 2009

CAWO Photochemisches Werk GmbH
P.O. Box 1129
D - 86521 Schrobenhausen
Phone: (++49) 8252 9109-0
Fax: (++49) 8252 9109-19
Internet: www.cawo.com
E-mail: cawo@cawo.com

